

MOVEMENT JOINTS

Waterproof Membrane

CEJ-171 WM

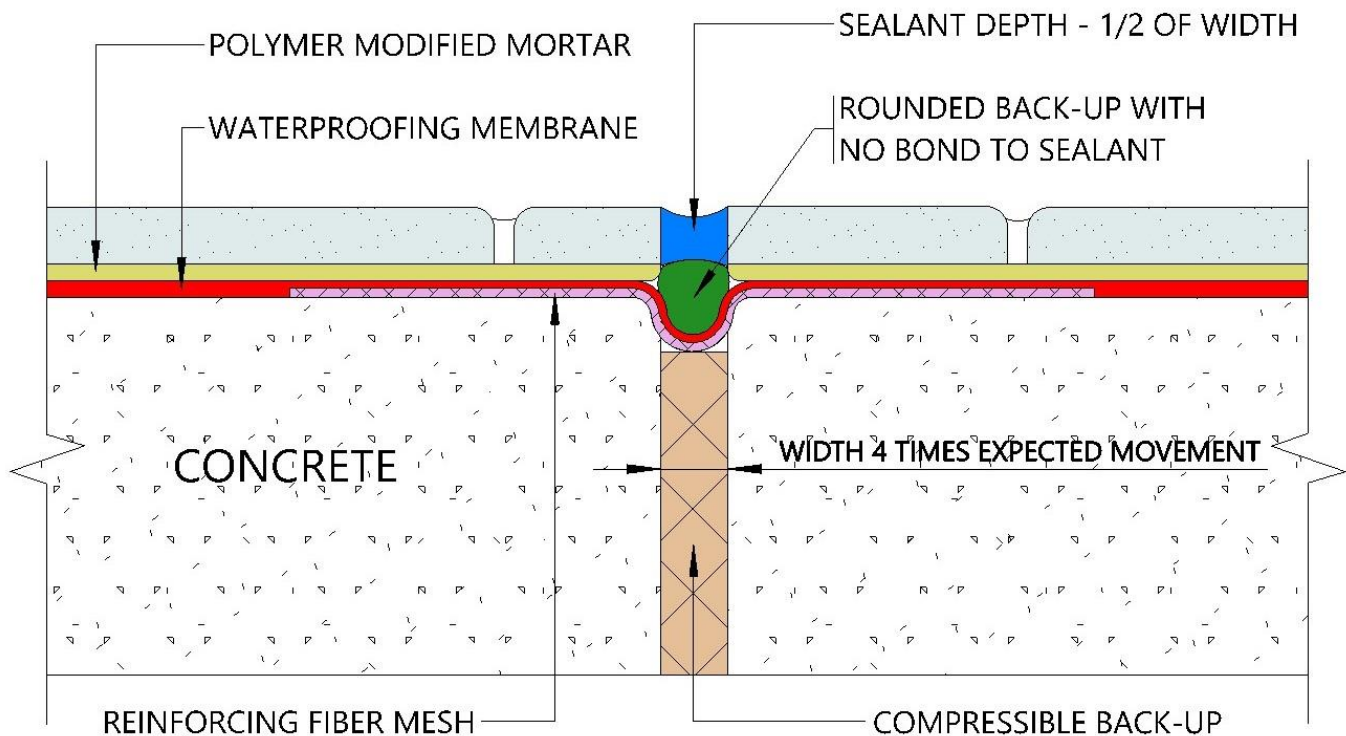
(TCNA EJ171 / TTMAC 301MJ)

As a courtesy to our customers, CUSTOM® Building Products reproduced drawings from the Tile Council of North America Handbook adding a Waterproof Membrane. Vital and important written information is included in the EJ171 section of the handbook. All tile assemblies available on the CUSTOM® website should be used as tools; in combination with the information provided in the TCNA Handbook. CUSTOM® Technical Services and CUSTOM® Technical University (CTU), highly recommend securing a copy of the [TCNA Handbook for Ceramic, Glass and Stone Tile Installation](#).

Perimeter and field movement joints within a tile installation are essential and required. These drawings provide general recommendations and guidelines, including the means by which movement joints in the substrates are carried through and incorporated into the tile assembly.

Because of the limitless conditions and structural systems on which tile can be installed, the design professional or engineer shall show specific locations and details of movement joints on project drawings. Preparation of the openings left by the tile contractor and installation of back-up strip and sealant should be specified in the Caulking and Sealant section of the job specification.

CEJ 171 W Expansion Joint



NOTE: Illustrations shows the necessary components of the tile installation method, including the substrate. This has not been drawn to scale. It is intended to clearly identify and label each component and its placement in the assembly.

*Refer to Product Technical Data Sheet for complete installation instructions and product limitations.

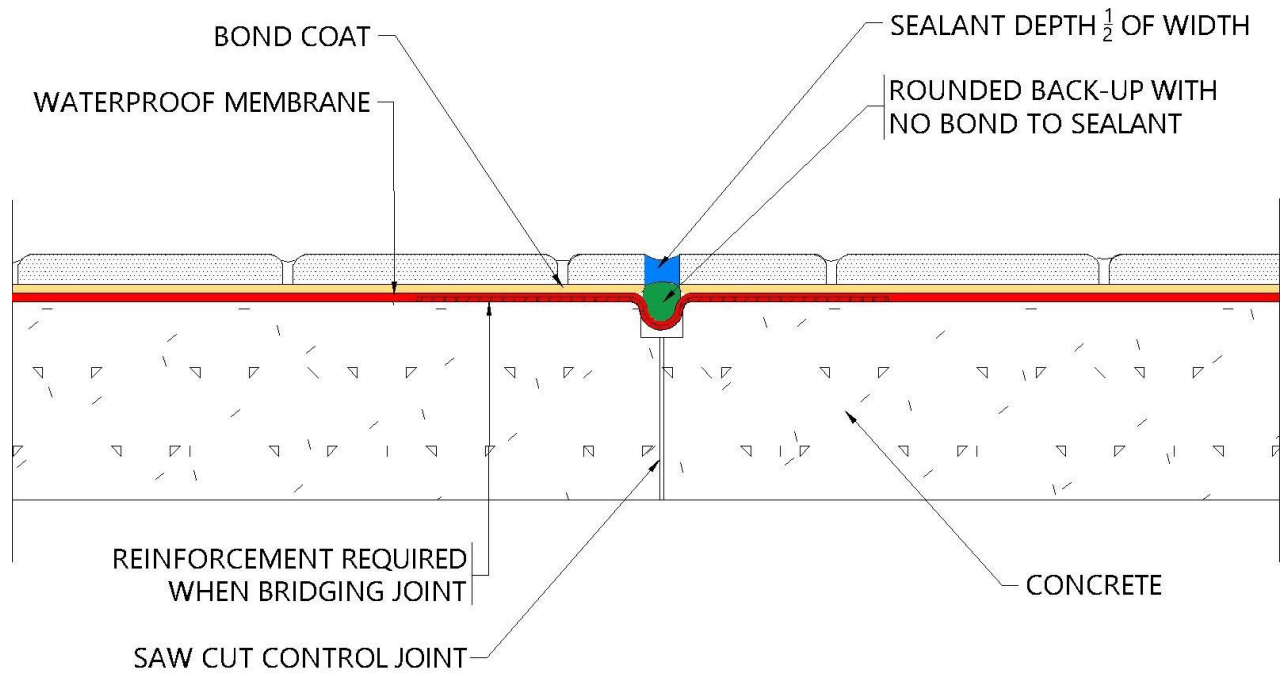
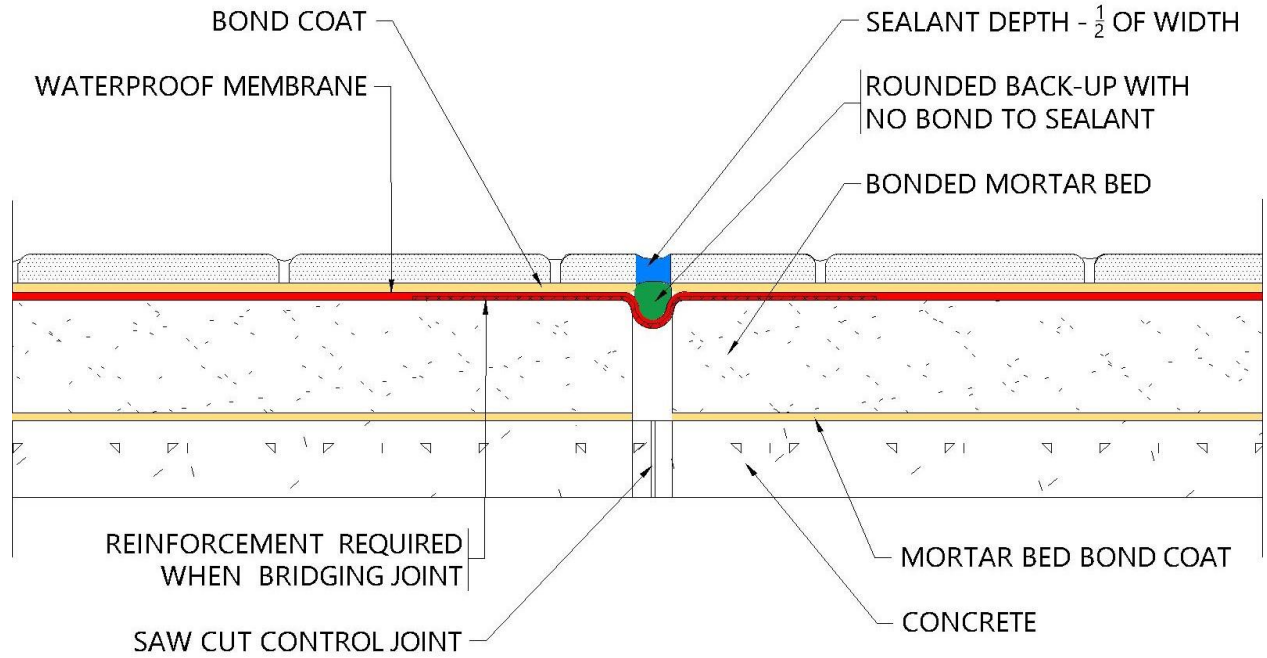
This drawing is listed in Tile Council of North America's (TCNA) Handbook for Ceramic Tile Installation. They are compatible with the drawings in Terrazzo, Tile and Marble Association of Canada's (TTMAC) Handbook. For your convenience, Custom Building Products options are substituted for TCNA's and TTMAC's generic product descriptions. Please refer to the handbooks for complete information.



CUSTOM®

TILE INSTALLATION SYSTEMS

CEJ 171 AW Construction Joint



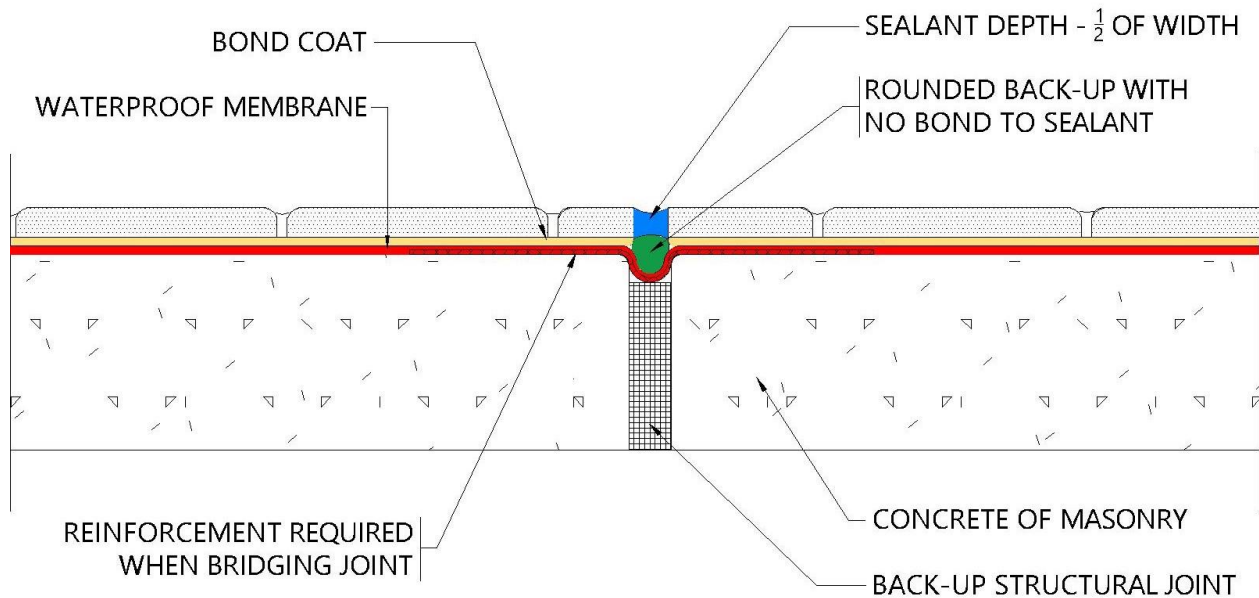
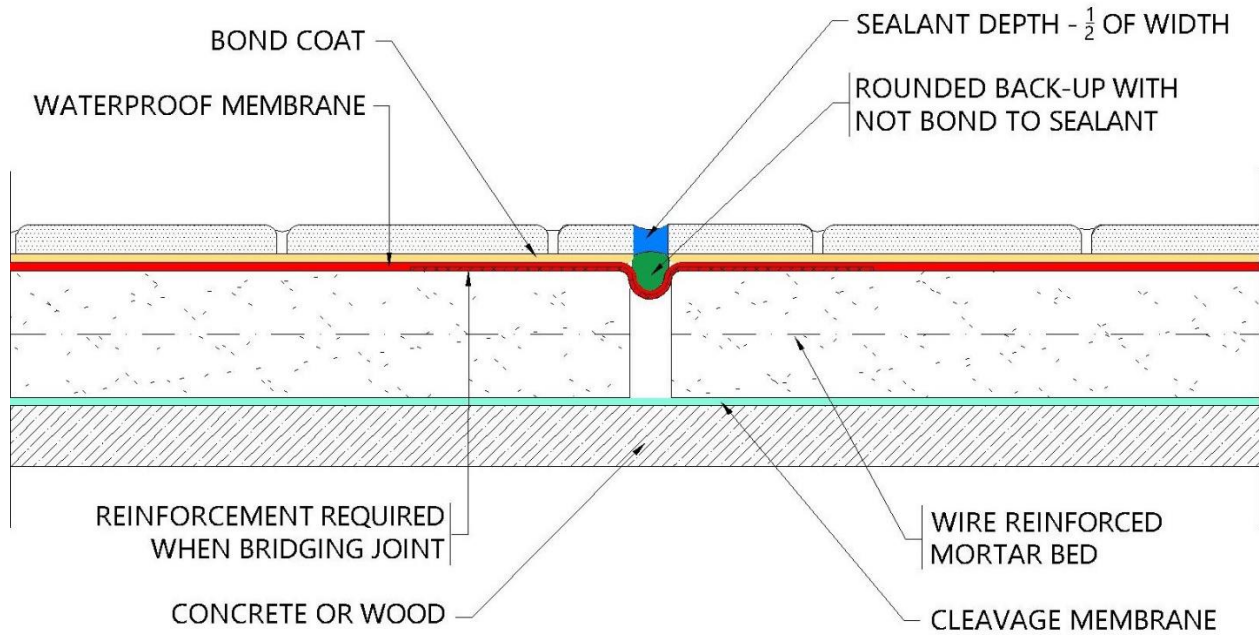
CEJ 171 BW Contraction Joint



CUSTOM®

TILE INSTALLATION SYSTEMS

CEJ 171 CW Expansion Joint



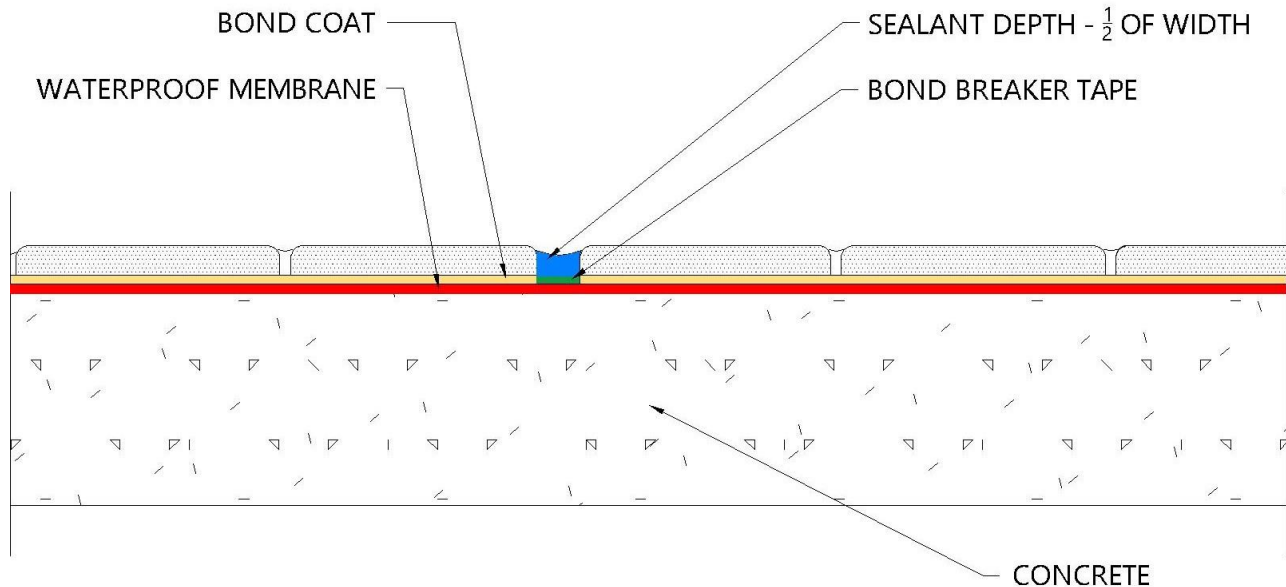
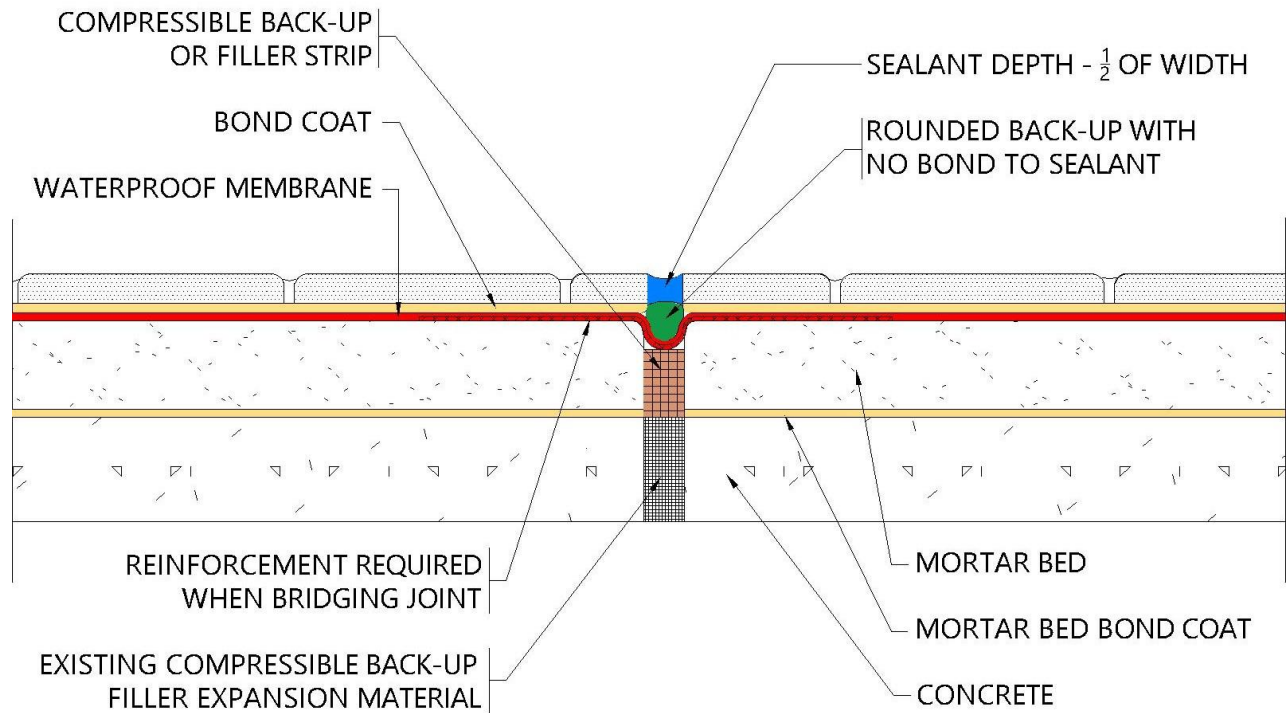
CEJ 171 DW Isolation/Expansion Joint



CUSTOM[®]

TILE INSTALLATION SYSTEMS

CEJ 171 EW Expansion Joint, Cement Mortar Bed, Bonded



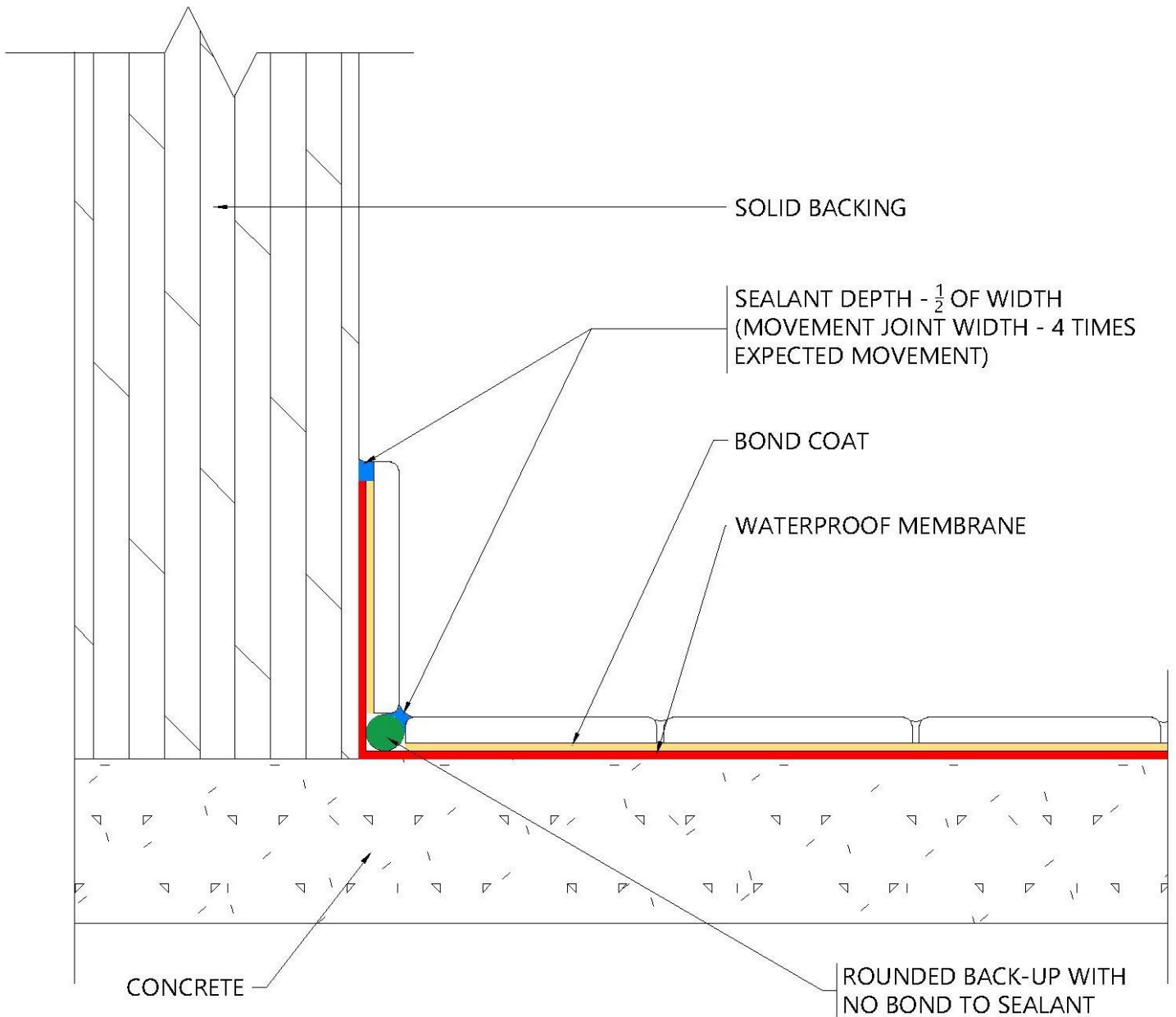
CEJ 171 FW Generic Movement Joint



CUSTOM[®]

TILE INSTALLATION SYSTEMS

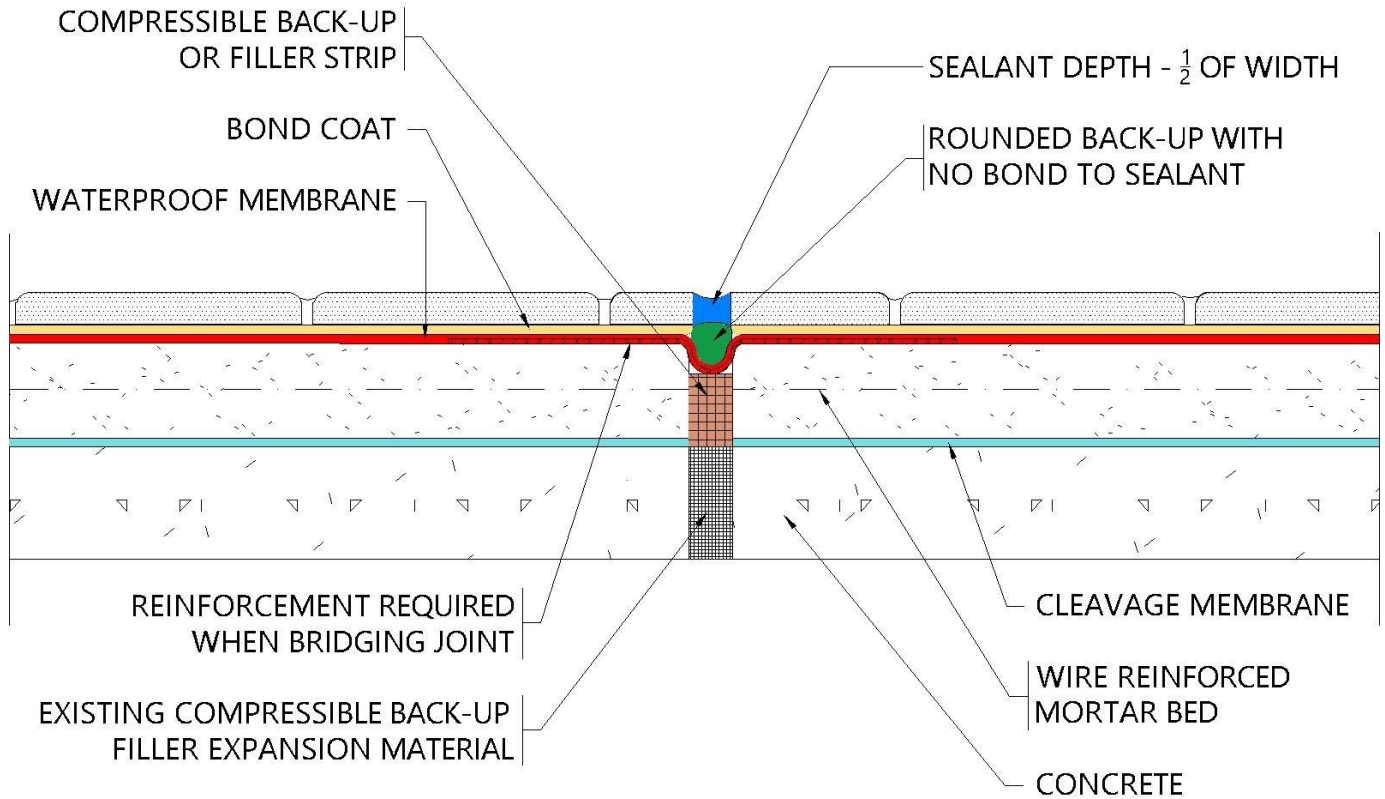
CEJ 171 GW Perimeter Joint



CUSTOM[®]

TILE INSTALLATION SYSTEMS

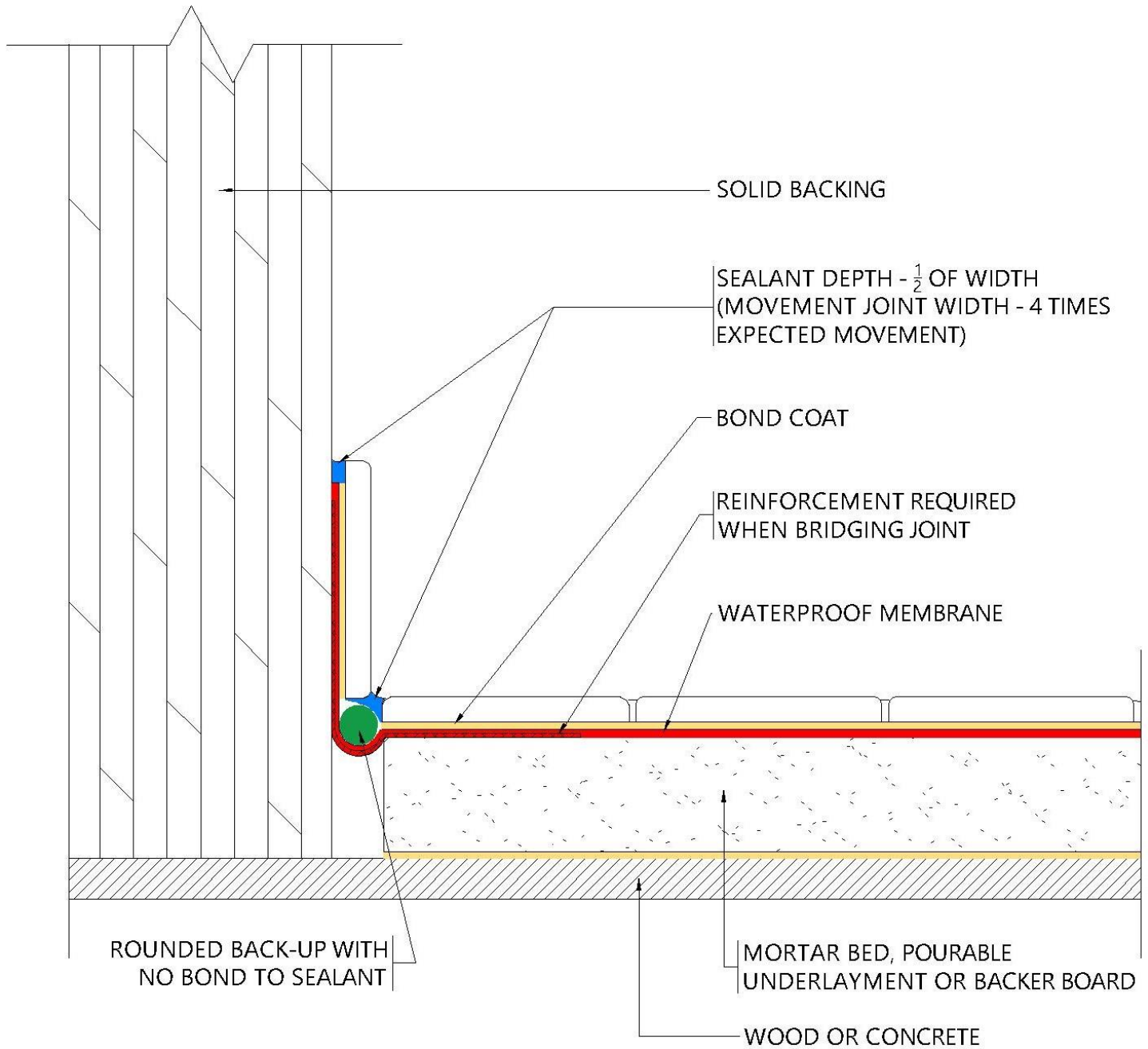
CEJ 171 HW Expansion Joint, Mortar Bed, Cleavage Membrane



CUSTOM[®]

TILE INSTALLATION SYSTEMS

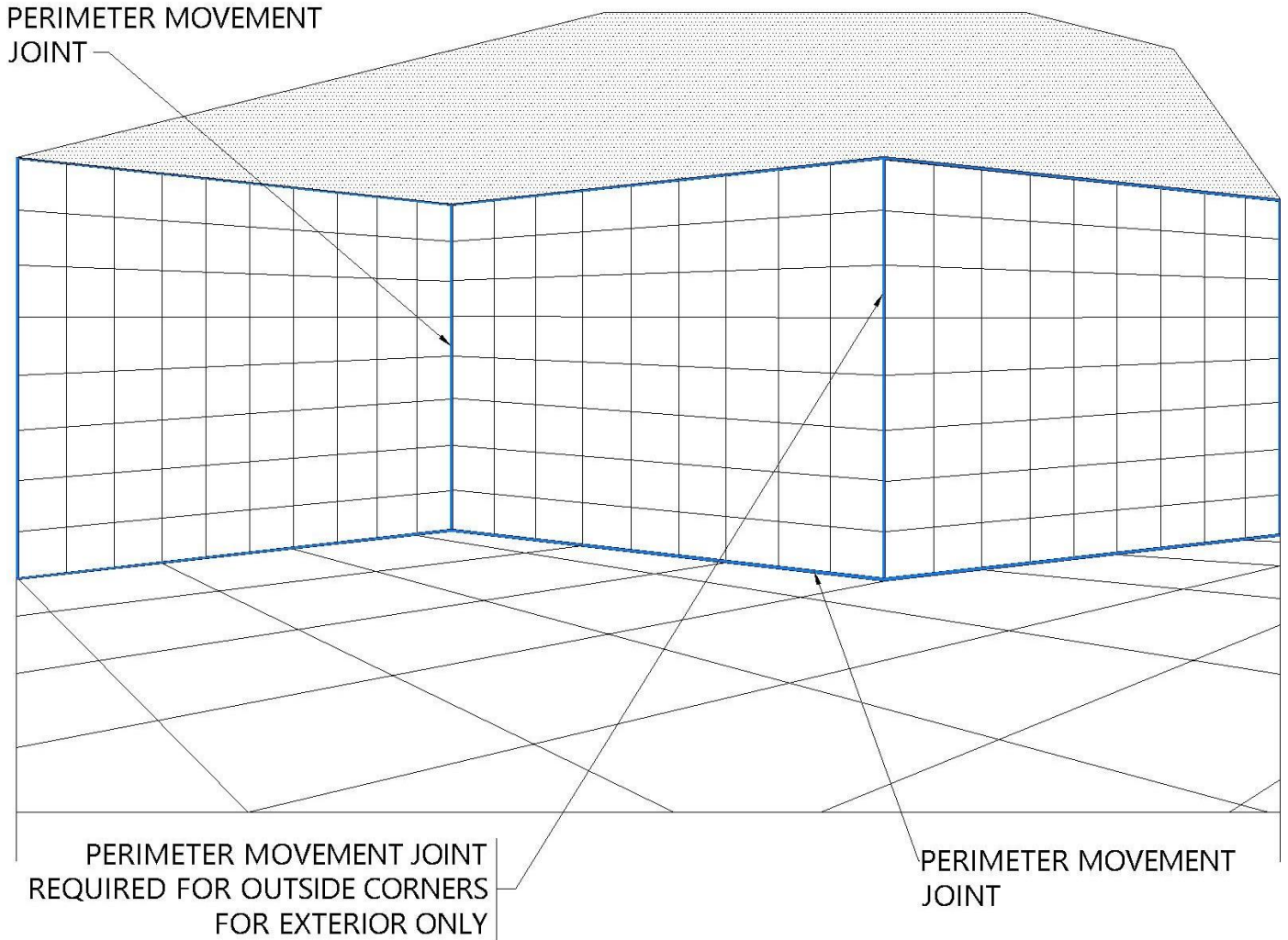
CEJ 171 IW Perimeter Joint



CUSTOM[®]

TILE INSTALLATION SYSTEMS

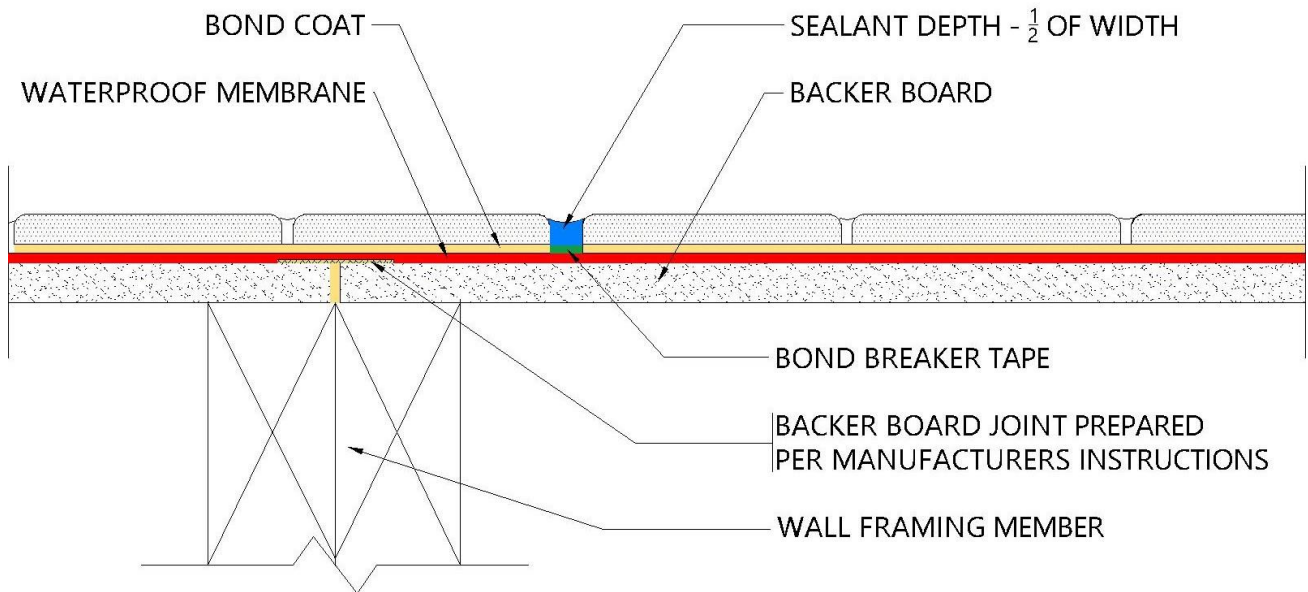
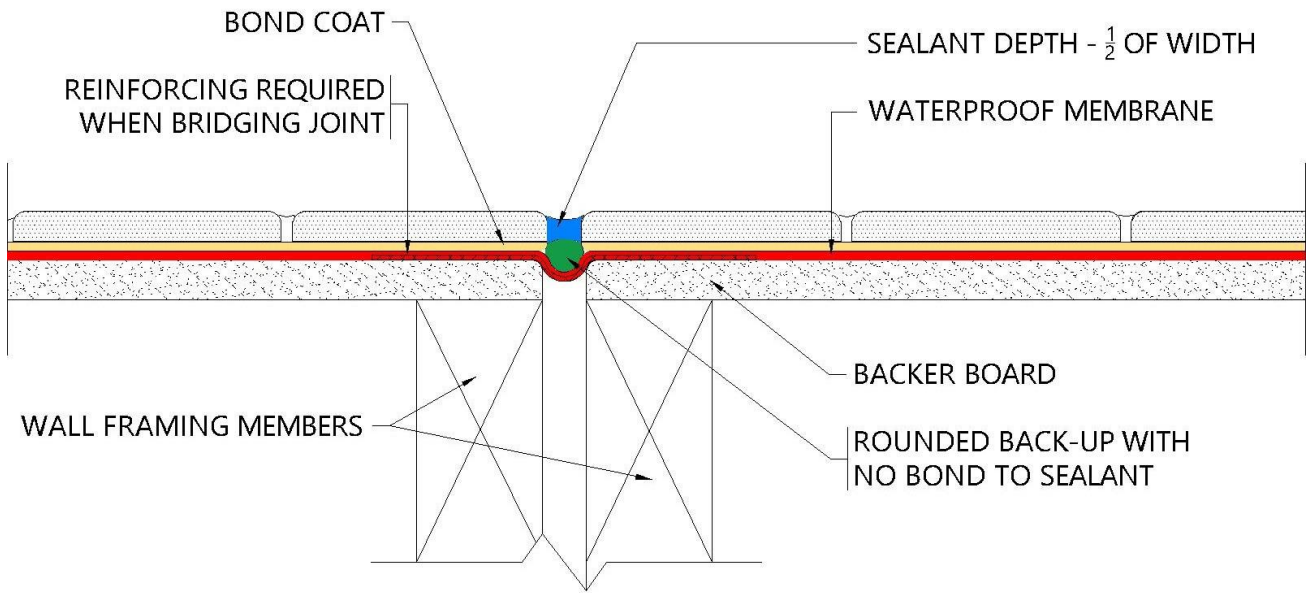
CEJ 171 JW Perimeter Movement Joint



CUSTOM[®]

TILE INSTALLATION SYSTEMS

CEJ 171 KW Movement Joint in Tile and Backer Board



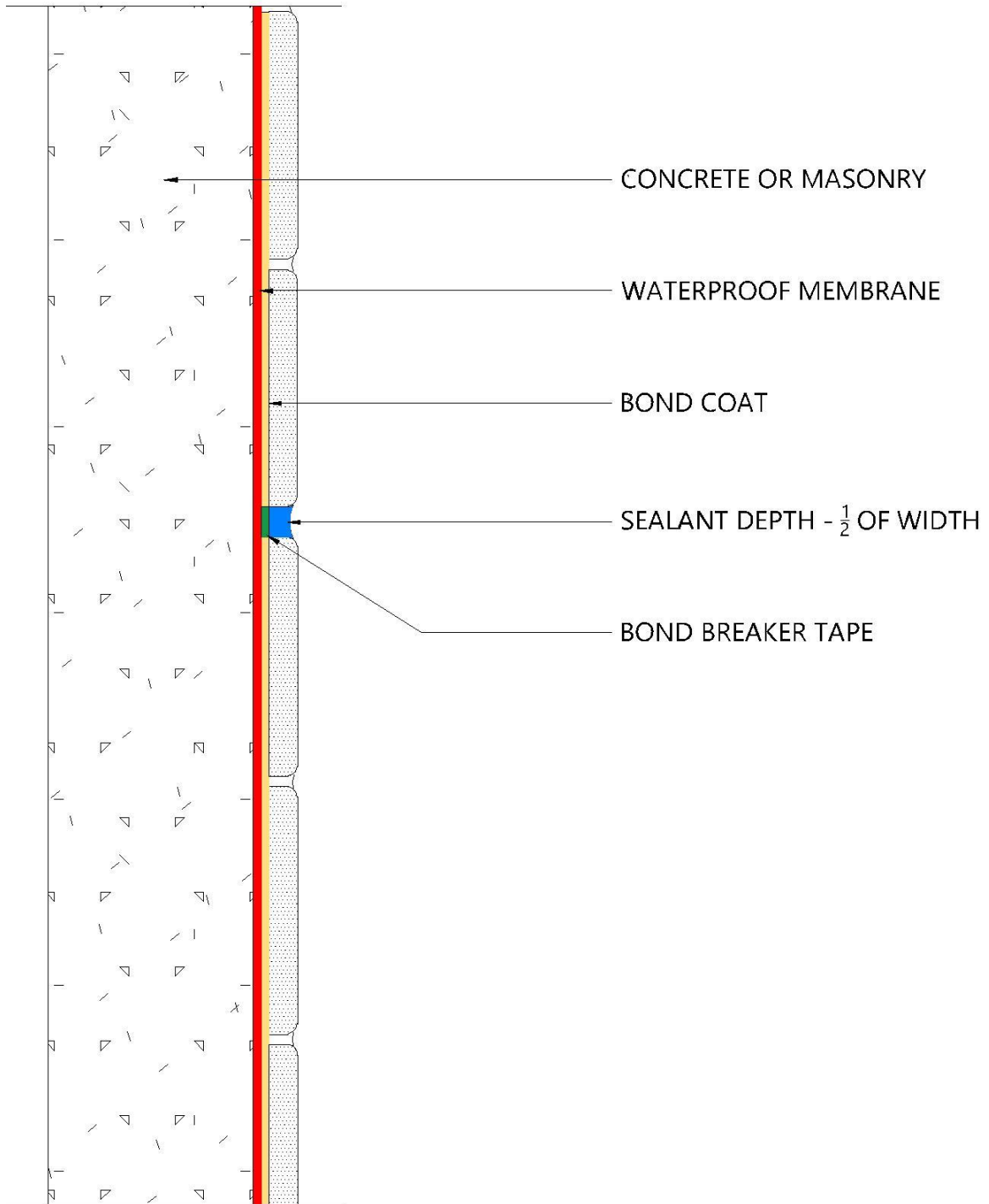
CEJ 171 LW Generic Movement Joint with Backer Board



CUSTOM[®]

TILE INSTALLATION SYSTEMS

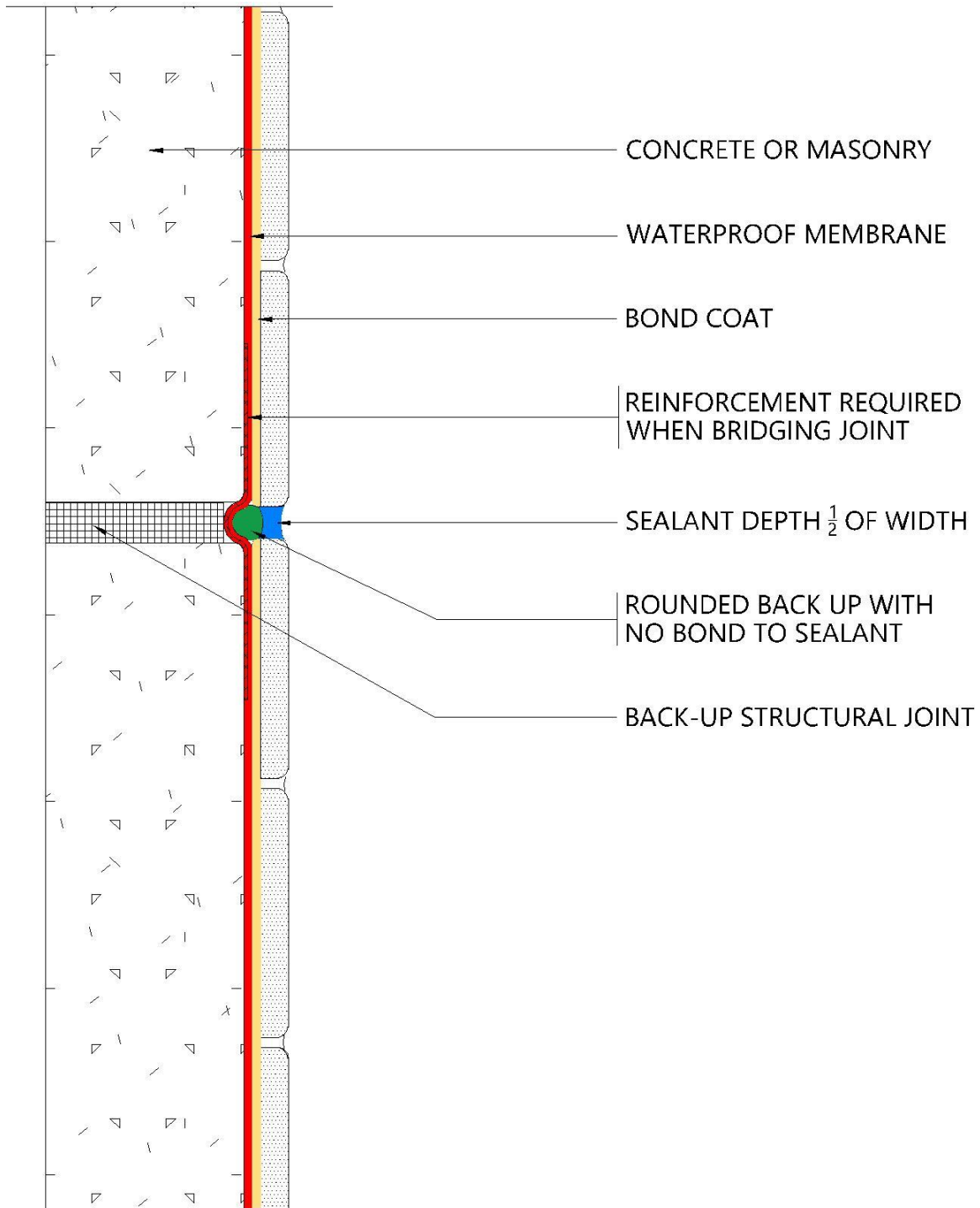
EJ 171 GCW Generic Movement Joint, Concrete or Masonry Walls



CUSTOM[®]

TILE INSTALLATION SYSTEMS

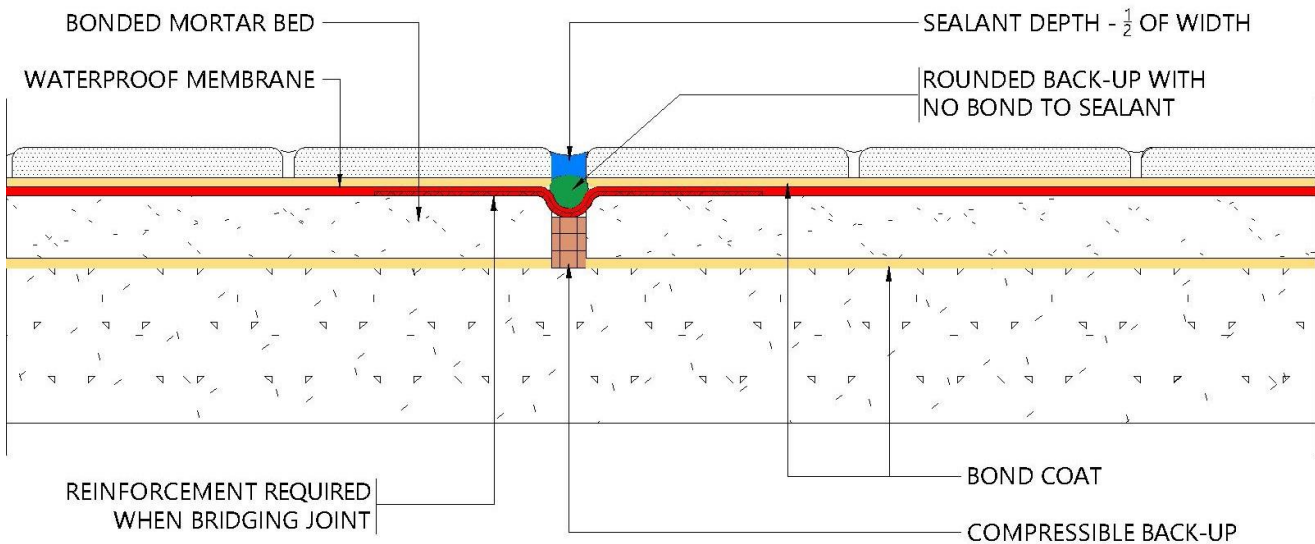
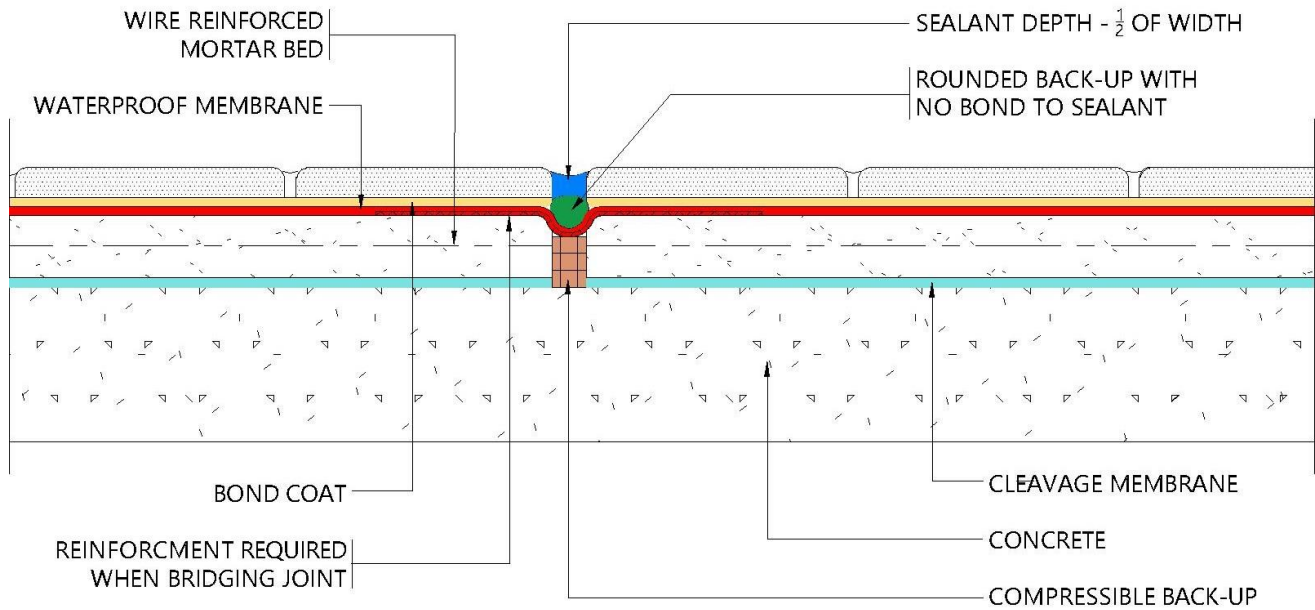
EJ 171 ECW Expansion Joint, Concrete or Masonry Walls



CUSTOM[®]

TILE INSTALLATION SYSTEMS

CEJ 171 NMW – Movement Joint, Reinforced Mortar Bed



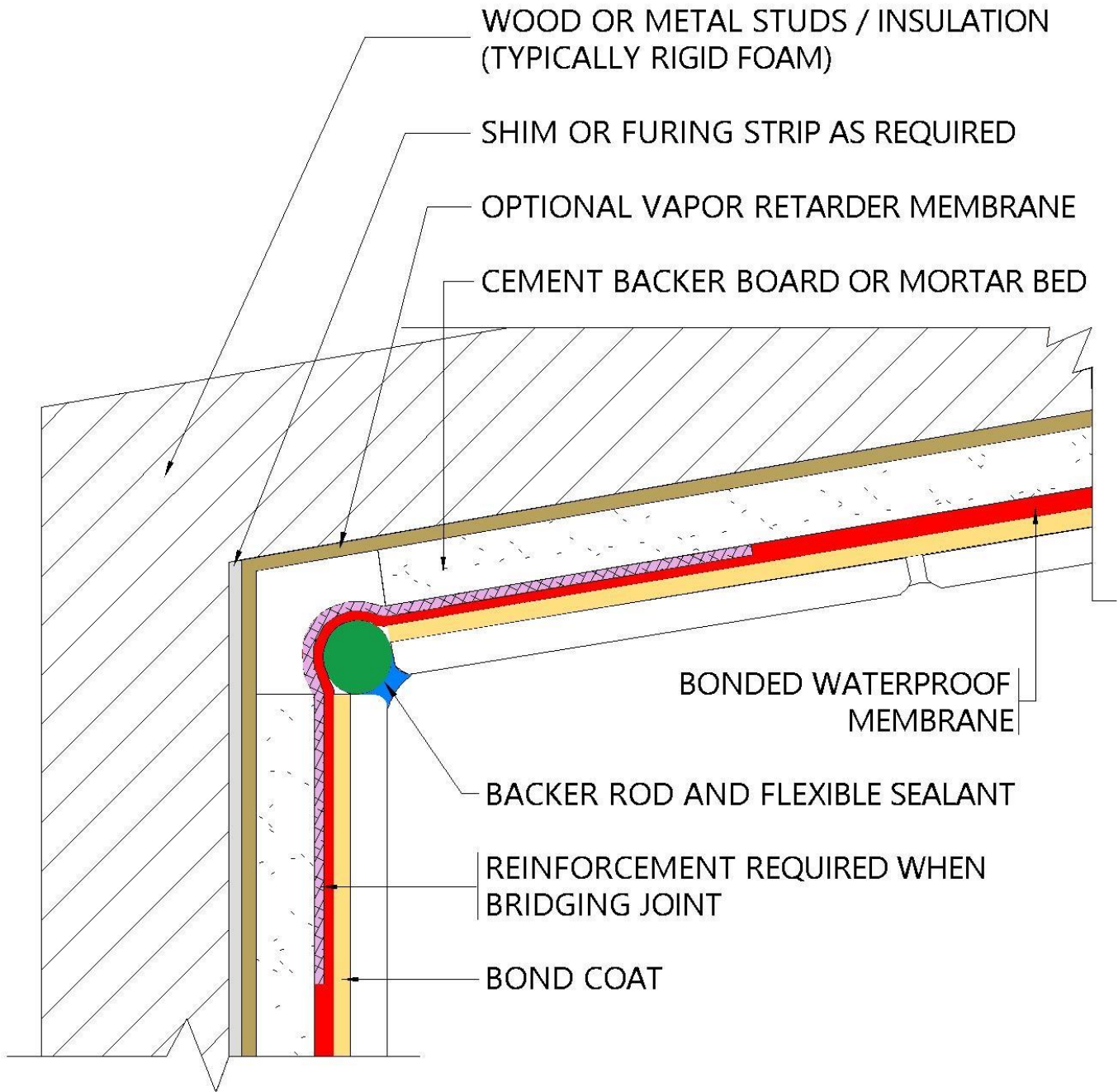
CEJ 171 BMW – Movement Joint, Bonded Mortar Bed



CUSTOM®

TILE INSTALLATION SYSTEMS

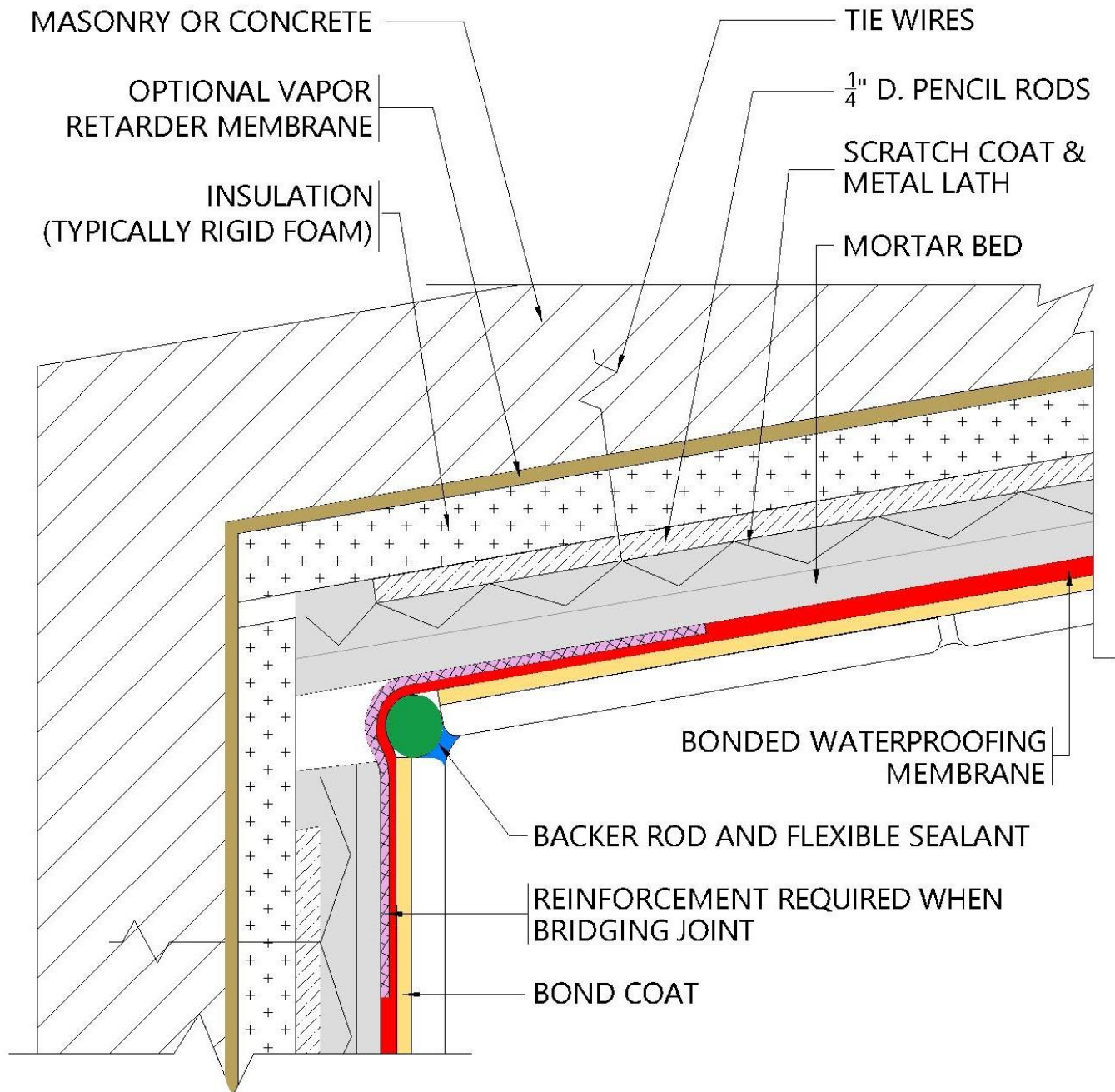
CEJ 171 SJBW – Steam Room Slip Joint, Cement Backerboard Units



CUSTOM[®]

TILE INSTALLATION SYSTEMS

CEJ 171 SJMW – Steam Room Slip Joint, Reinforced Mortar Bed



CUSTOM®

TILE INSTALLATION SYSTEMS